

06
boutique luxury
Highcroft Home

08
enriching experiences
Interlachen Country Club

shea
ink

Waterbury House



volume 24 issue .03 Summer 2024

WATERBURY HOUSE

THE VIBE

Design that marries midcentury modern elegance with fresh, current elements and experiences for residents

THE RESULT

Waterbury House is luxury living with first-class amenities, high-end apartment units and a stunning restaurant for both residents and the public

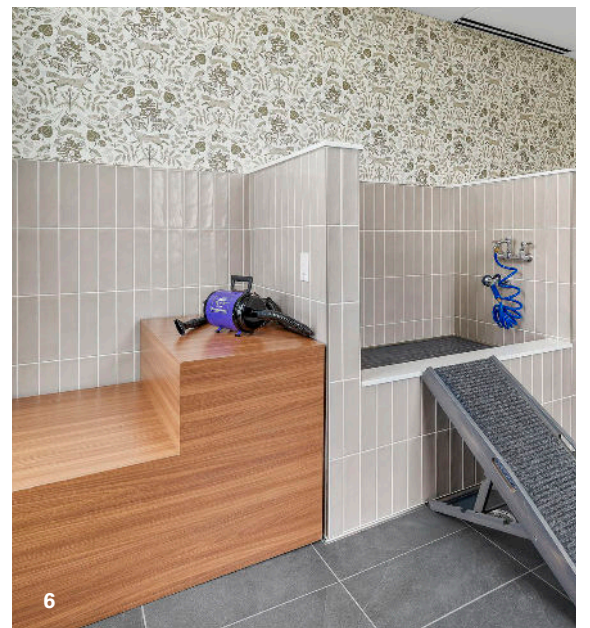
COMMON AREA HIGHLIGHTS:

- Rich, dark-wood millwork features, curved architectural elements and warm lighting glows create the luxurious atmosphere
- A rooftop pool deck and entertainment spaces, golf simulator/entertainment room, fitness center and pet spa
- The Waterbury Club sky lounge with TVs, poker tables, fireplace, large meeting tables, lounge spaces and more – all with views overlooking Bde Maka Ska
- Common area art and décor selected by Shea and procured, installed and styled by SheaMakes

Gallery Tour

- 1 Lobby Entrance
- 2,3 Sky Lounge
- 4 Rooftop Entertainment
- 5 Golf Simulator
- 6 Pet Spa
- 7-11 Unit Interiors
- 12 Coffee Shop & Café
- 13-15 Restaurant & Bar

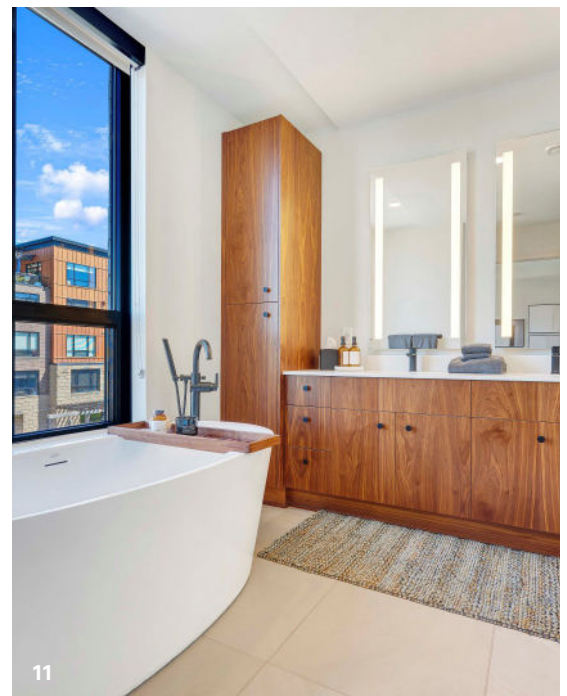




WATERBURY HOUSE CONTINUED

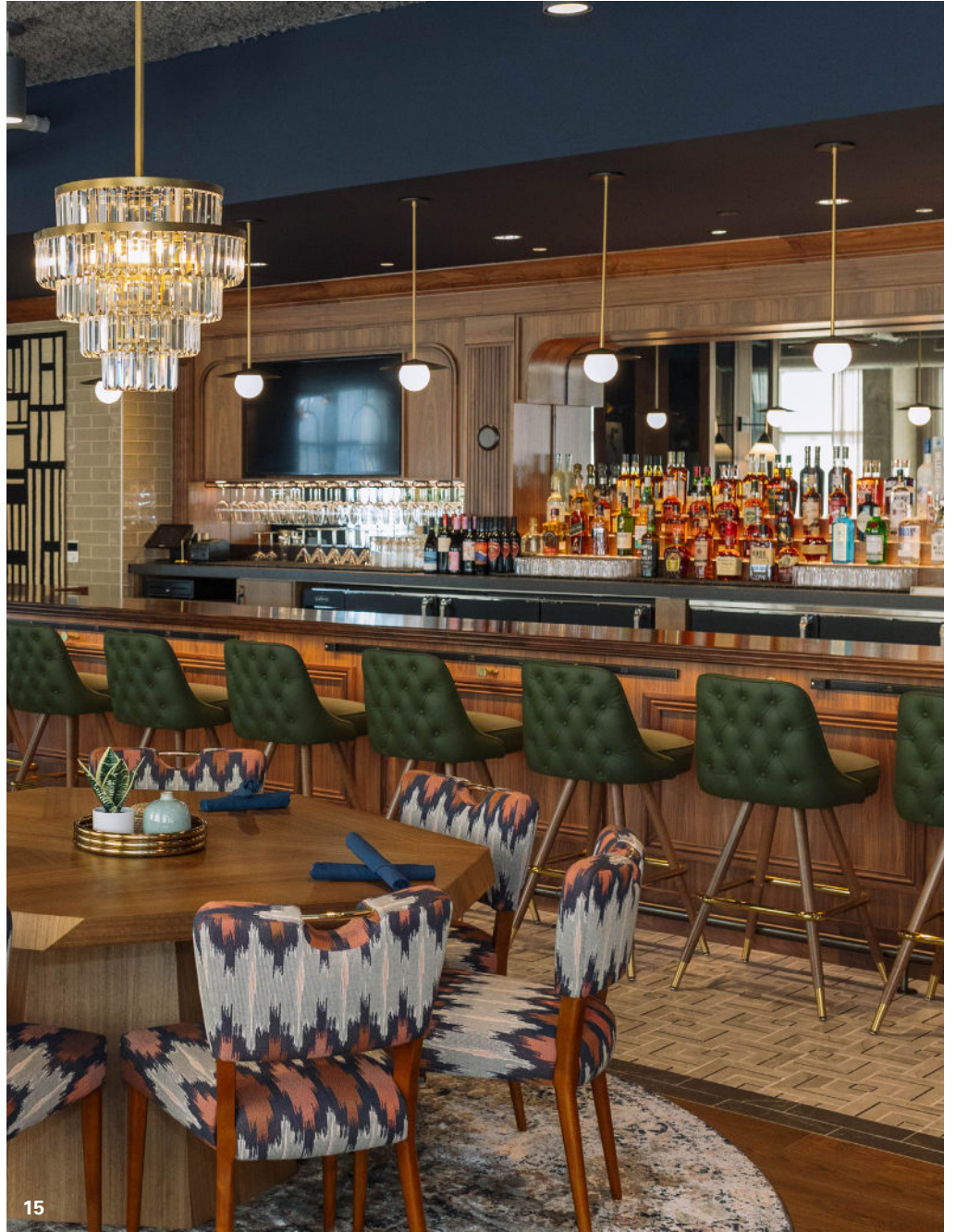
RESIDENCE UNIT HIGHLIGHTS:

- Sleek, modern aesthetic that provides the perfect backdrop for any resident's style
- Rich wood tones in the cabinetry paired with glossy white backsplash and light countertops
- High-end finishes continued into the bathroom, creating a complete stylish interior throughout the full unit
- An upgraded finish package selected for all penthouse units for a special touch



WATERBURY RESTAURANT HIGHLIGHTS:

- Continues the bold design of Waterbury House while introducing playful artwork and décor to create a setting that smoothly transitions from coffee shop and café in the morning through a moodier happy hour and dinner in the evening
- Variety of seating that ranges from lounge-y comfort and morning coffee nooks to bar and dining seating for groups
- Gorgeous lighting, pops of jewel-toned furniture, sleek finishes and an eye-catching bar
- Bold, inviting atmosphere both residents and the greater community can enjoy again and again



HIGHCROFT HOME

THE VIBE

A welcoming, stylish boutique store showcasing luxury linens, home goods, clothing, perfume and merchandise

THE RESULT

Enticing displays within a bright, refreshed atmosphere that prompts guests to engage with Highcroft's range of offerings

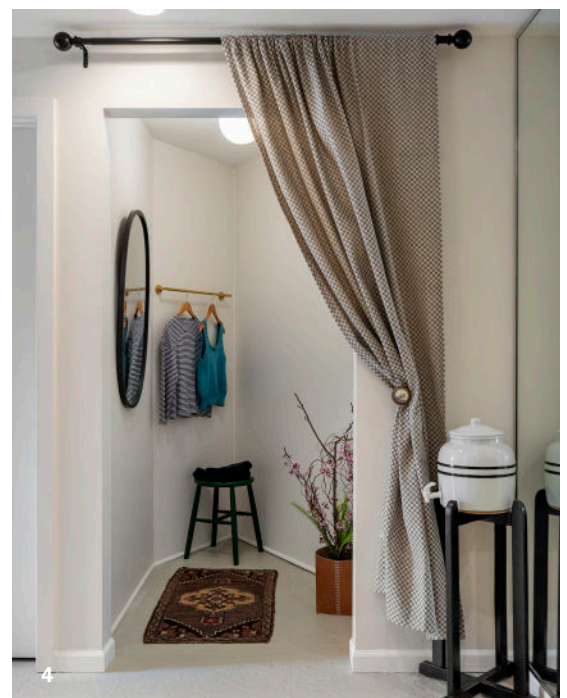
THE HIGHLIGHTS:

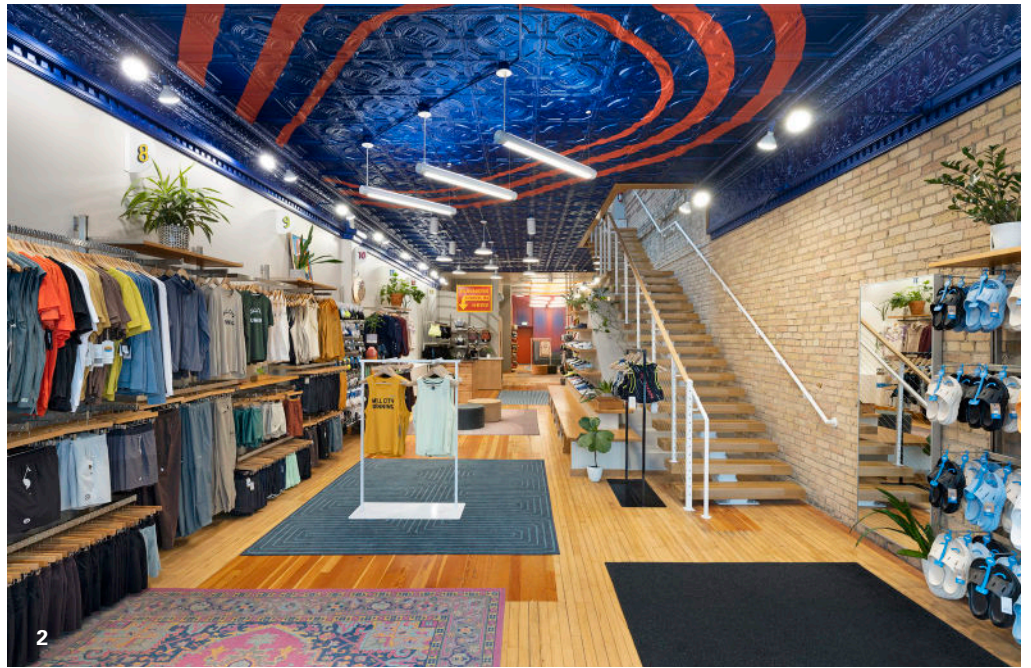
- Custom millwork with adjustable shelving and unique, curved end-cap feature provides stunning displays and creates the illusion that the store gained additional space
- Updated layout with relocated POS system for better use of space and greater interaction with guests
- Stunning display of swatches on brass hooks paired with a consultation counter giving guests the ability to touch and see each fabric as they create custom linen orders
- New flooring, fresh paint colors and enhanced merchandise displays round out the new design and create the welcoming atmosphere

Gallery Tour

1-3 Retail Floor

4 Fitting Room





MILL CITY RUNNING

THE VIBE

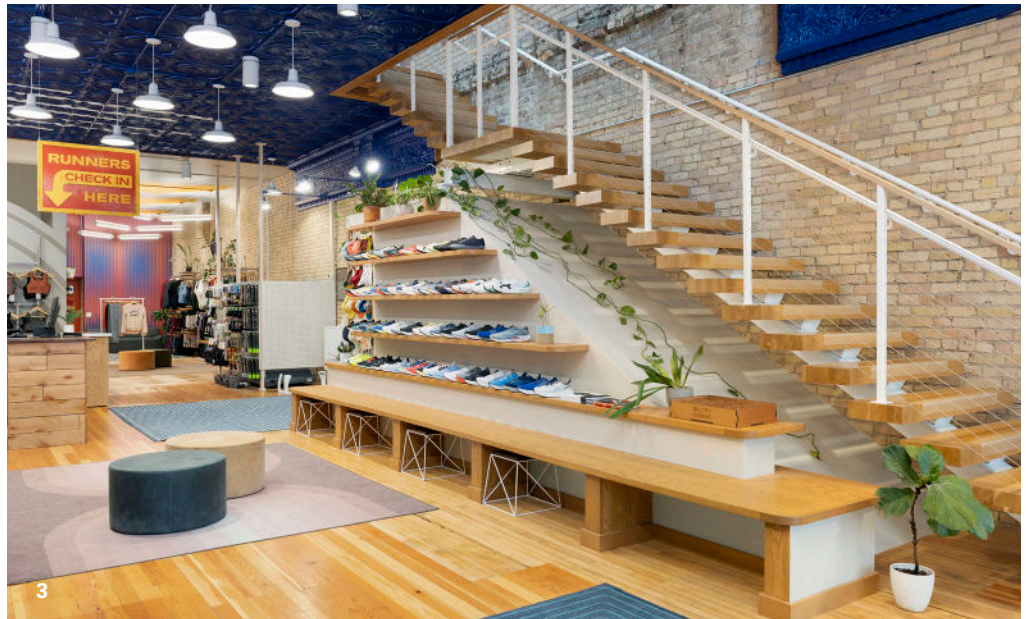
Bigger and bolder – a place where both experienced and new runners feel a motivating jolt of energy when they visit

THE RESULT

Our second run with Jeff and Bekah Metzdorff, we refreshed and expanded the original Mill City Running store with bold patterns, pops of color and engaging new merchandising and displays

THE HIGHLIGHTS:

- New patterns everywhere: oval track lines painted on the ceiling at the entrance, triangles on the ceiling in the back and a custom, Shea-designed wall covering in the back retail area
- A new staircase in the front of the store, opening up the space to the upstairs Mill City Running offices
- Integrated retail displays and services for customization including a foot scanner and treadmill to help guests find and try the perfect running shoes
- Expanded Bra Shop with a focus on interaction and creating tailored experiences for guests
- Unique shoe wall and varied merchandise displays that add energy and vibrancy to the Mill City Running shopping experience



Gallery Tour

1–3 Retail Floor

4 Fitting Rooms

INTERLACHEN COUNTRY CLUB WEST CAMPUS

Gallery Tour

- 1 The Lodge Dining & Bar
- 2 The Fieldhouse Retail
- 3 Warming House
- 4,5 Café & Lounge
- 6 Locker Room

THE VIBE

A wide range of enriching experiences that feel new yet seamlessly integrated into the rich history and community of Interlachen Country Club

THE RESULT

Our biggest project with Interlachen yet, and part of their Interlachen 2025 Master Plan, the new West Campus is a complete transformation that introduced three ground-up buildings – The Lodge, The Fieldhouse and the Tennis Pavilion – with bold design and experiences, as well as a fully integrated campus of outdoor entertainment, flex spaces, green space, walking paths and a courtyard

THE LODGE HIGHLIGHTS:

- A new restaurant and bar providing a more casual compliment to the Clubhouse's existing dining options
- Flexible dining configurations that can be easily rearranged for special events
- An eye-catching bar with patinated finishes that give historic vibes tying to Interlachen's 1909 establishment
- Pops of color from the blue tile around the expo and the patterned floor tile defining the bar space
- Nods to Interlachen's history including custom wall covering with sketches depicting varied Interlachen memories, as well as a gallery wall with framed old photos and event printouts



THE FIELDHOUSE HIGHLIGHTS:

- A welcoming entrance that integrates a café, varied seating and a small retail area with custom displays and SheaMakes racket light fixture
- A one-stop-shop for members looking to improve their health and wellness as well as have opportunities for relaxation and comfort
- Multiple fitness spaces including an open gym area with machines, racks and weights, as well as a yoga studio, pilates studio and a spin studio with color changing lights for those needing an extra boost of high-energy
- State-of-the-art locker rooms with steam rooms, saunas and cold tubs, as well as a barber's chair in the men's locker room
- Finishes, décor and displays nodding to Interlachen's storied history





SPOON AND STABLE REFRESH

THE VIBE

An award-winning Minneapolis restaurant with an elevated air that pairs with the incredible culinary experience

THE RESULT

A refreshed atmosphere from our original 2014 design that celebrates Spoon and Stable's iconic status as they approach their 10-year anniversary

THE HIGHLIGHTS:

- Back bar facelift with new storage, lighting, paint color, design details and floral arrangement focal point
- Refurbished furniture with additional new pieces to elevate the dining room
- New decorative lighting elements and dimmable features to create a moodier atmosphere
- Fresh paint and flooring to maintain a high-quality feel and experience for new and returning guests

Gallery Tour

- 1 Bar
- 2,3 Dining Room
- 4 Lighting



CRAVE GALLERIA REFRESH

THE VIBE

A lively restaurant and bar featuring Crave's iconic bold energy backed with a light and airy refreshed design

THE RESULT

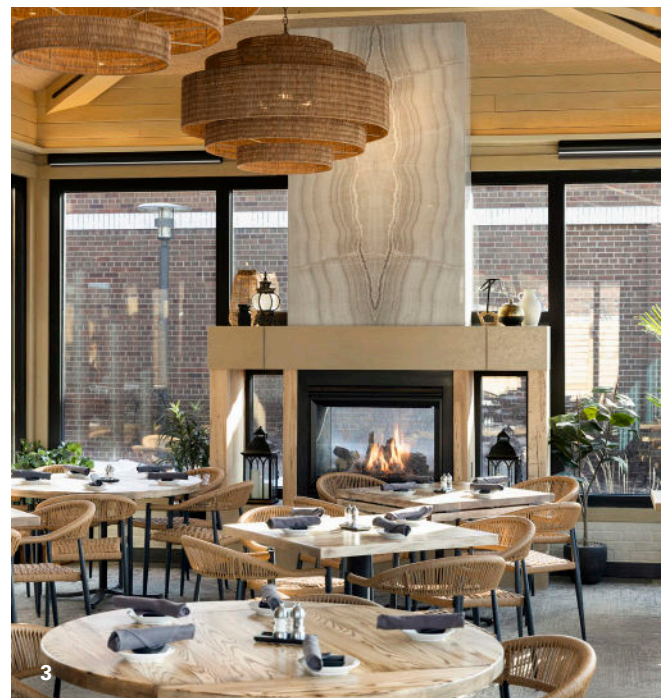
A complete transformation from our original 2007 design, with fresh furniture, fixtures and an all-new style that showcases the same fan-favorite Crave

THE HIGHLIGHTS:

- Updated floor plan to introduce new booth and banquette seating, including six new round booths down the center of the dining room
- Completely refreshed bar that feels lighter in both weight and palette, featuring an open overbar, light wood bar wall, new countertop and new barstools
- Statement wicker booth anchoring the chef's table; a custom piece produced and installed through SheaMakes
- A resort-like vibe with new light fixtures, furniture and finishes, plus an expanded patio

Gallery Tour

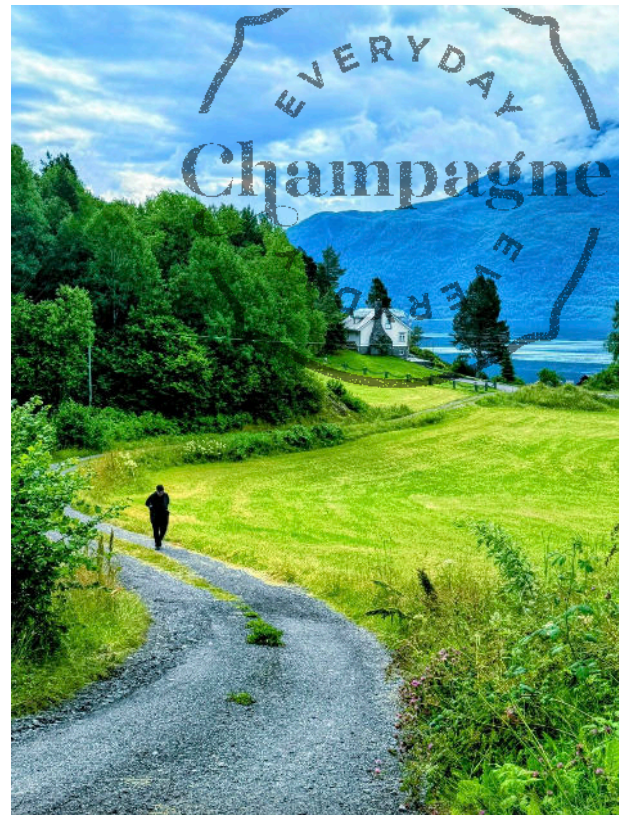
- 1 Bar
- 2 Dining Room
- 3 Patio Dining



shea, inc. // 10 south eighth st. // minneapolis mn // 55402



A'Lu Mexican Cuisine The bright, Boynton Beach, FL restaurant features a casual lounge area, a bar with a statement wall design, varied dining seating and an outdoor patio space to highlight its elevated Mexican cuisine. A SheaMakes custom basket installation hangs over the dining room adding an eye-catching, playful element to the restaurant. Shea partnered on both the interior design and logo.



612.339.2257
sheadesign.com
X & Instagram @shea_inc

We travel the world to inspire our work.
Join on sheadesign.com/wetravel
and on X & Instagram @edaychampagne